

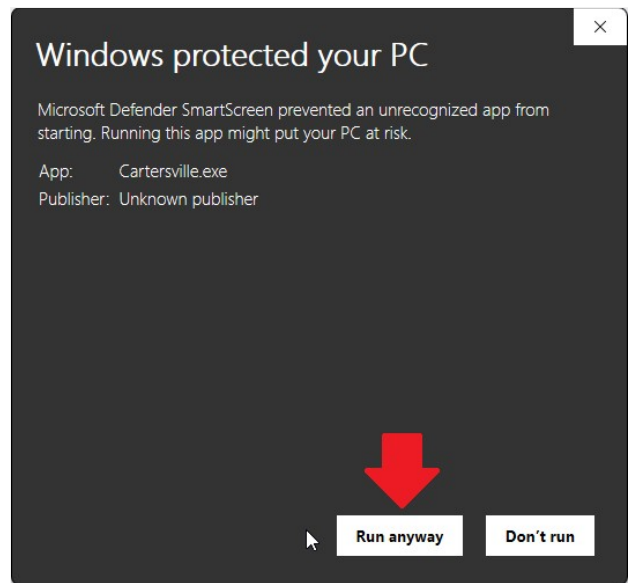
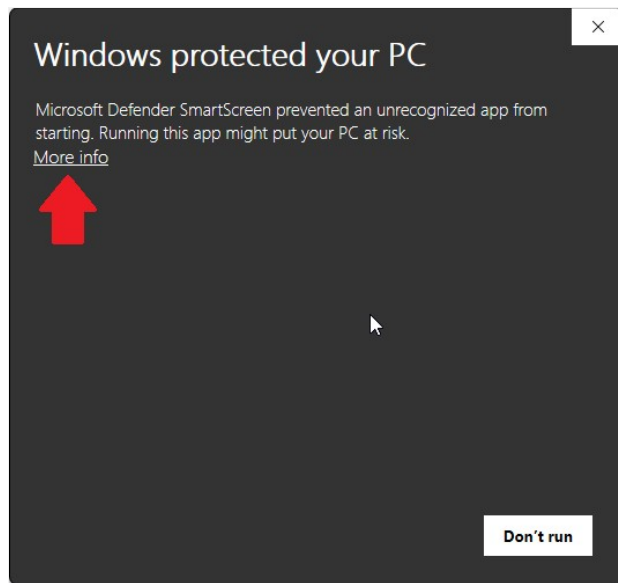
Keller Williams: Rawls Group

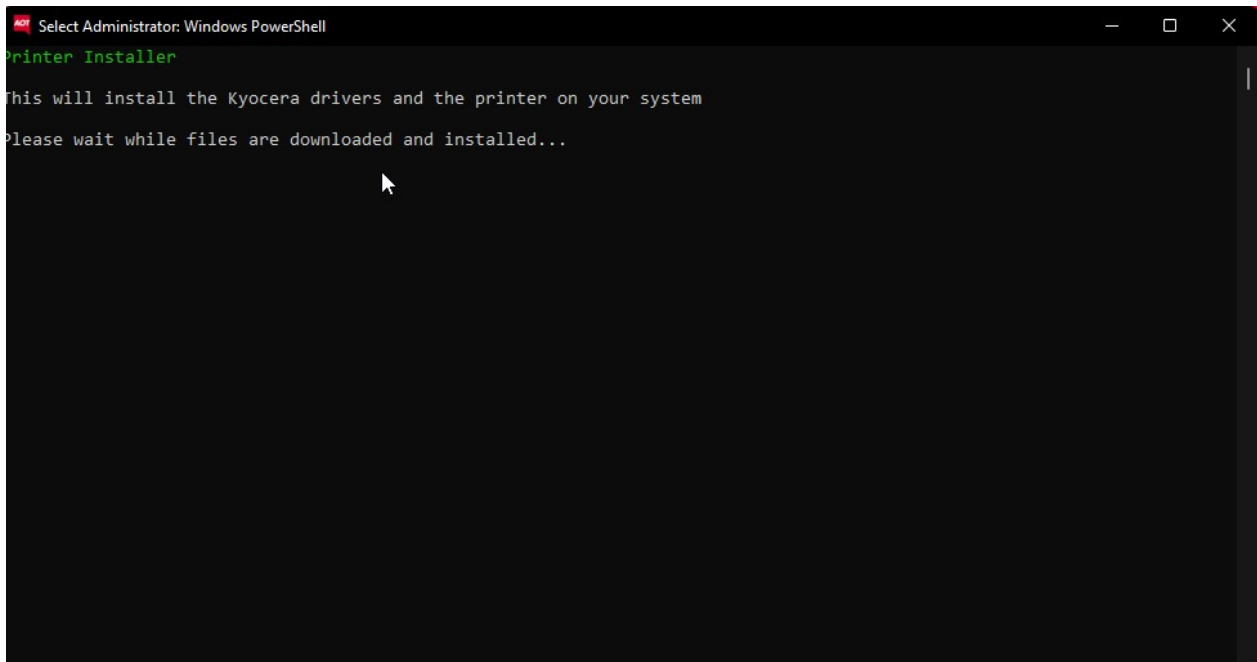
Windows - Install Guide

Download then run the Installer and wait for it to finish.

Note: If you are having trouble downloading please disable your antivirus temporarily.

The screenshot shows the Keller Williams Rawls Group Downloads website. The header includes the AOT Office Technologies logo and AOT Support, with navigation links for Home, Downloads, and Help. The main heading is "Keller Williams" with the subtitle "Rawls Group Downloads". Below this, there are five download cards for different locations: MC178 - KWAN - East Cobb, MC247 - KWAP - Dunwoody, MC271 - KWPR - Brookhaven, MC156 - KWFA - Sandy Springs, and MC372 - KWCS - Cityside. Each card contains buttons for Windows, Mac, and MyQ. The footer contains the copyright notice: © 2025 AOTSupport.com. All rights reserved.



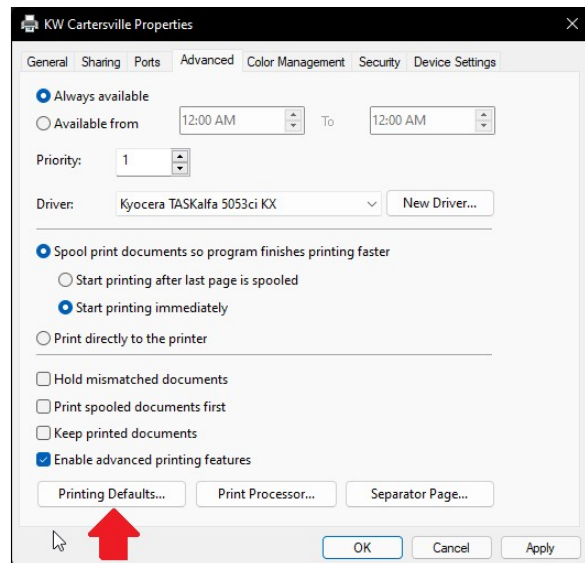
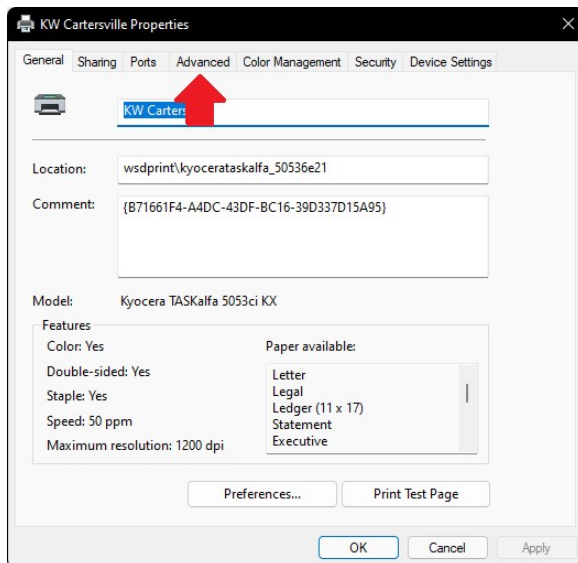


Once the installer finishes it will close automatically and the Printer Properties below will open.

Printer Properties

Once the install finishes you will be presented with this window.

Click on the Advanced Tab and proceed to the next step.



Driver Defaults

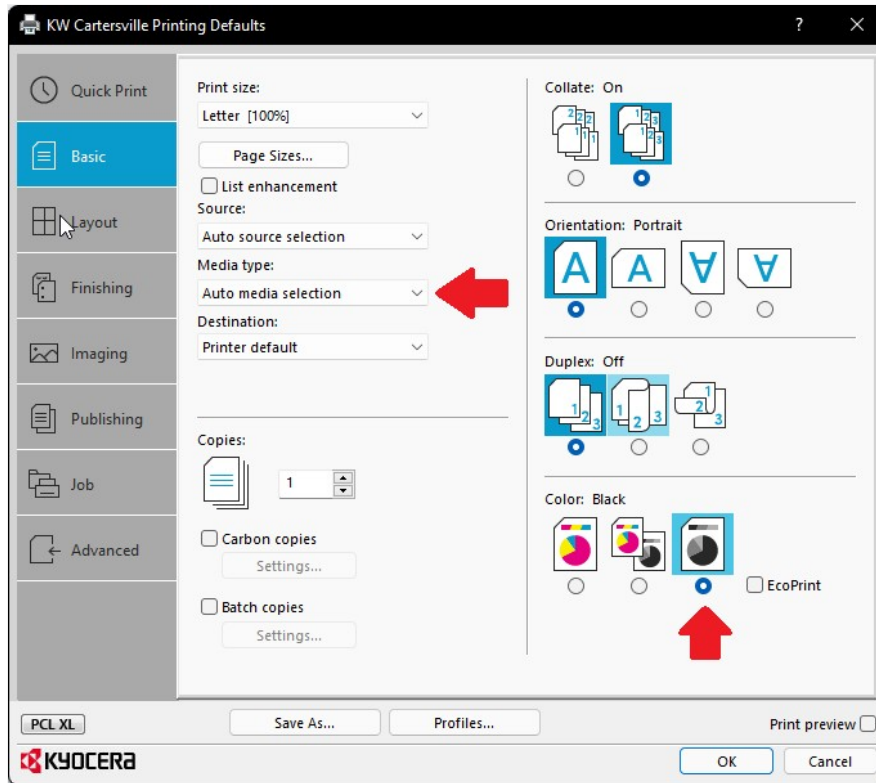
Click the "Printing Defaults..." then change the following.

Media Type: Auto Media Selection

Duplex: Off

Color: Black

Once finished Click the "OK" button



Adding Device Options

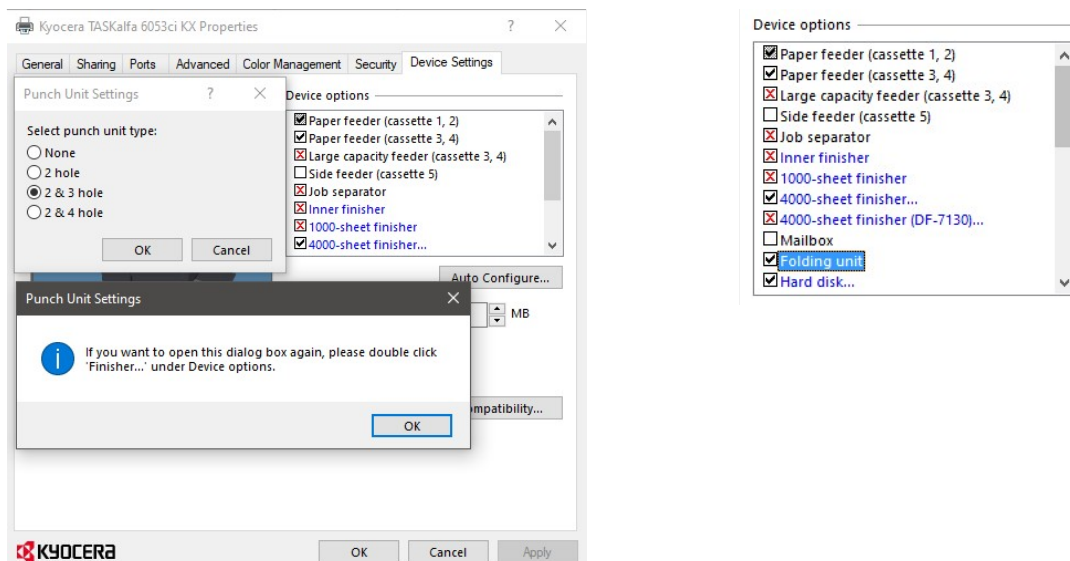
Click Device Settings

Put a check mark in the following options:

Paper Feeder (3,4)

4000-sheet finisher... (When the pop up opens choose 2 & 3 hole and press ok, then press ok on the next pop up window)

Folding Unit



Your Driver Install Is complete. Press the OK button on the printer dialog window and proceed to the MyQ Install Guide.

MyQ Install | MC178, MC247, MC271

Download the MyQ installer for the correct Market Center then run the installer by following the steps below.

Running the Installer

Click next until you reach the screen asking for a server address. Type the server address for the location you are at into the field then click into the server port box so the next button becomes active.

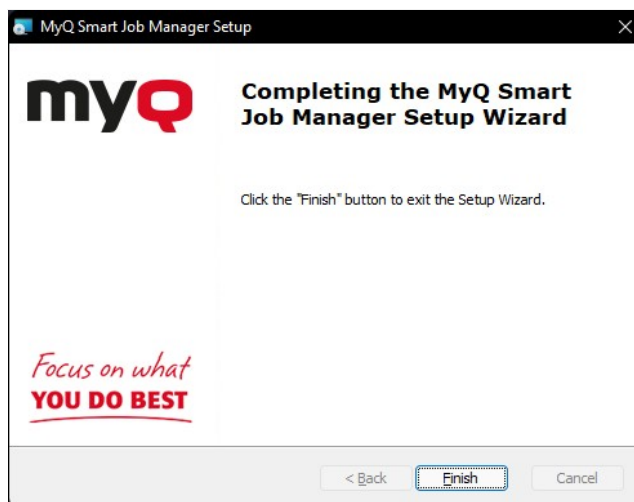
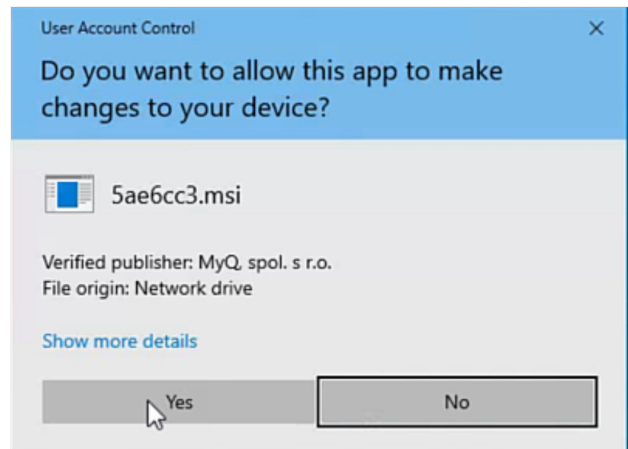
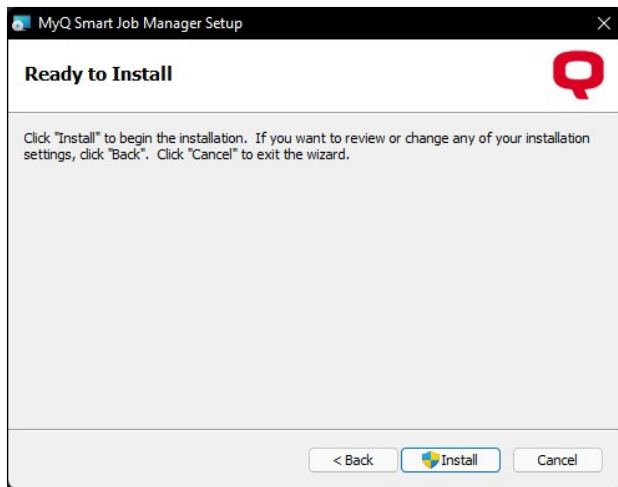
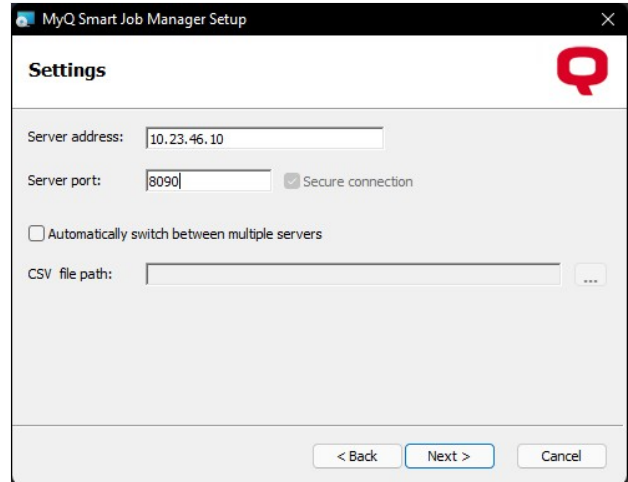
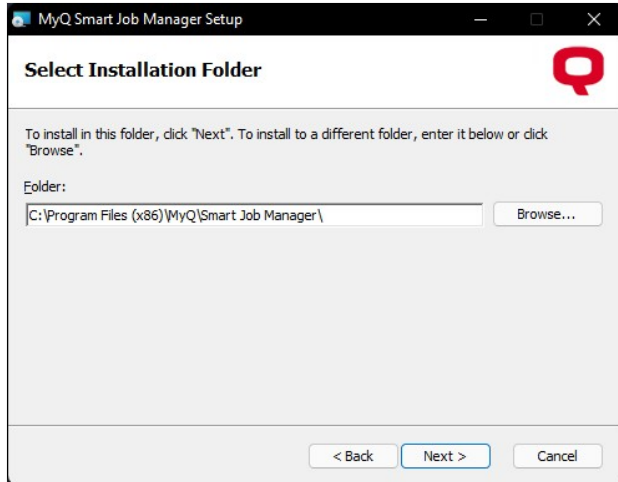
Select Install then select Yes on the next window that opens.

Finally Click Finished.

Important Note: Do not change the Server port, just click in the box so you can click the next button.

Location	Server Address
MC178 - KWAN - East Cobb	10.0.3.10
MC247 - KWAP - Dunwoody	192.168.1.10

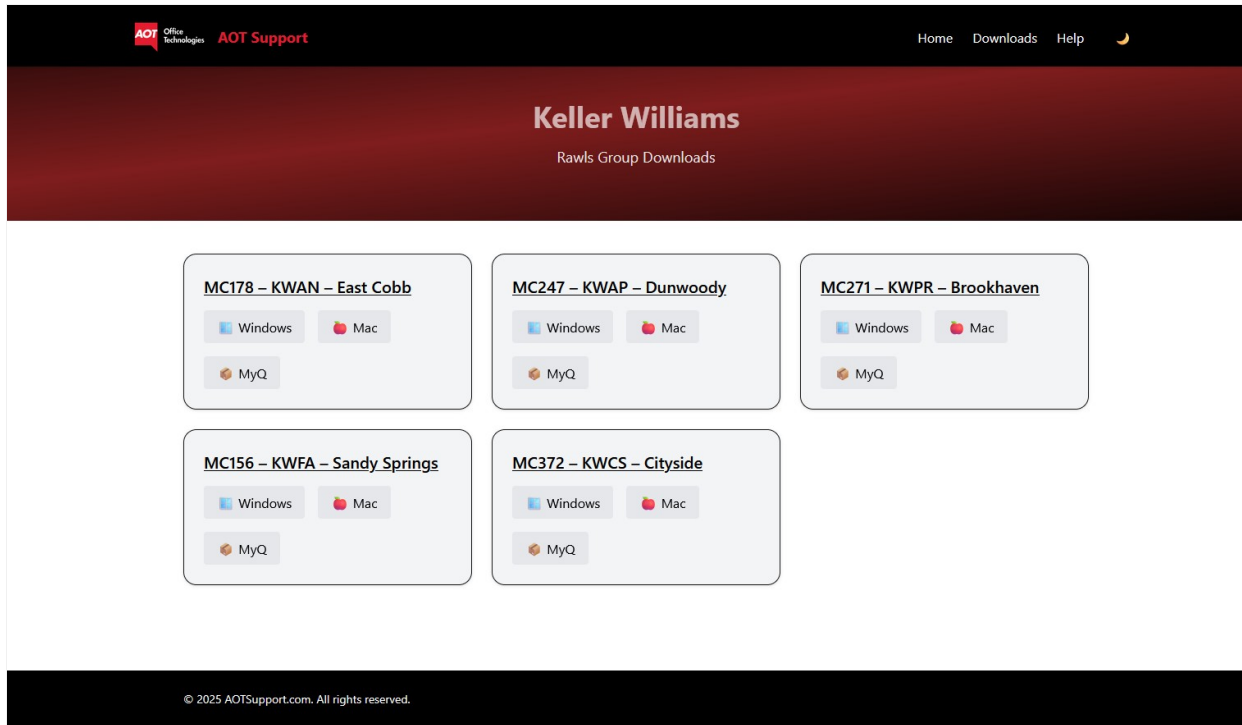
Location	Server Address	Client ID	Secret
MC271 - Brookhaven	10.39.26.197	1A14C35F-17C2-4950-BE09-2912D6EABD28	54bd3a94efdb0c34835979bf5f59fa26f55f51cf



MyQ Install | MC156

Download the Installer

Download the MyQ installer for the correct Market Center then run the installer by following the steps below.



Running the Installer

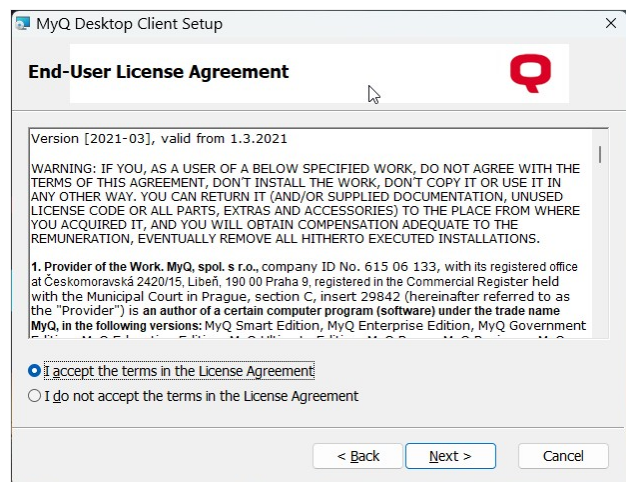
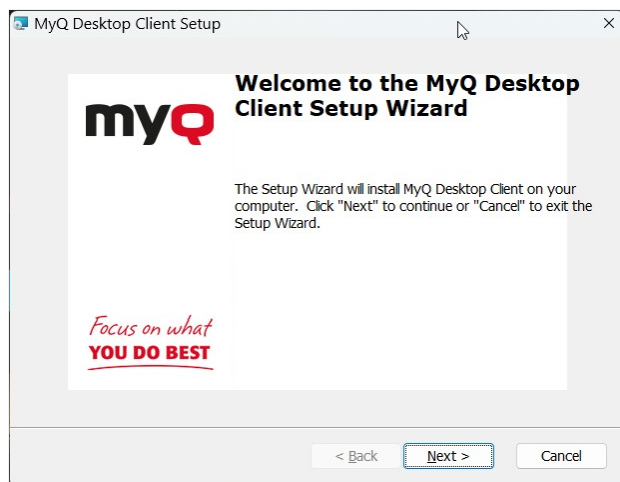
Click next until you reach the screen asking for a server address. Type the server address for the location you are at into the field then click into the server port box so the next button becomes active.

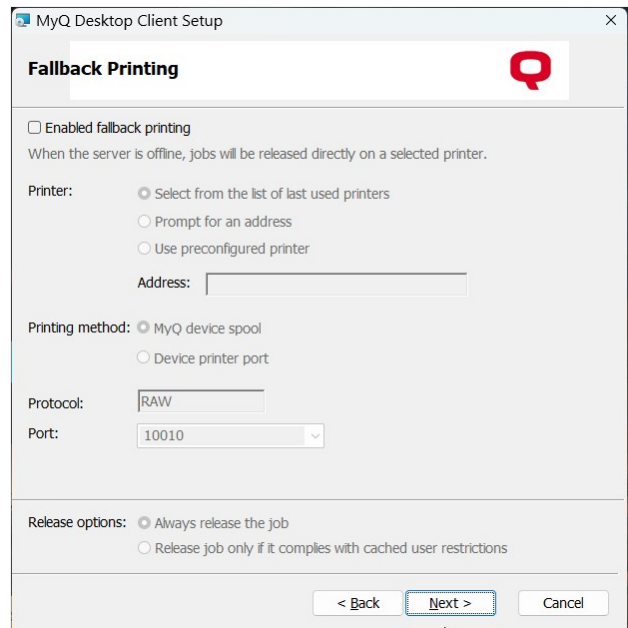
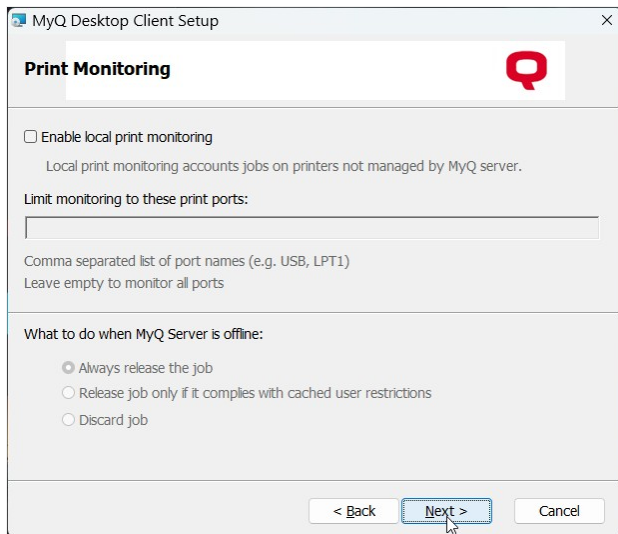
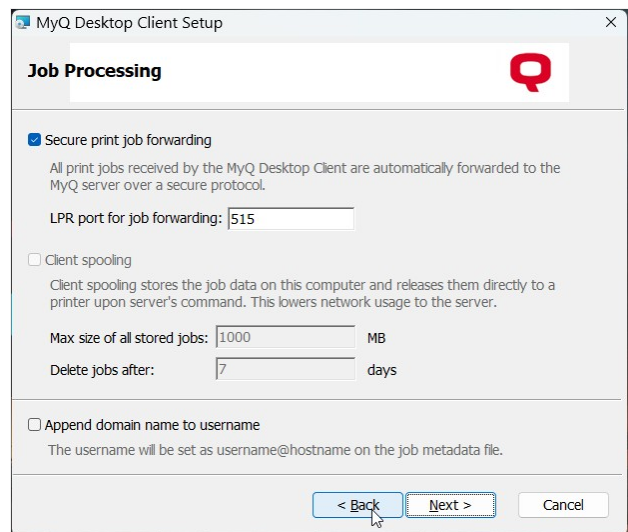
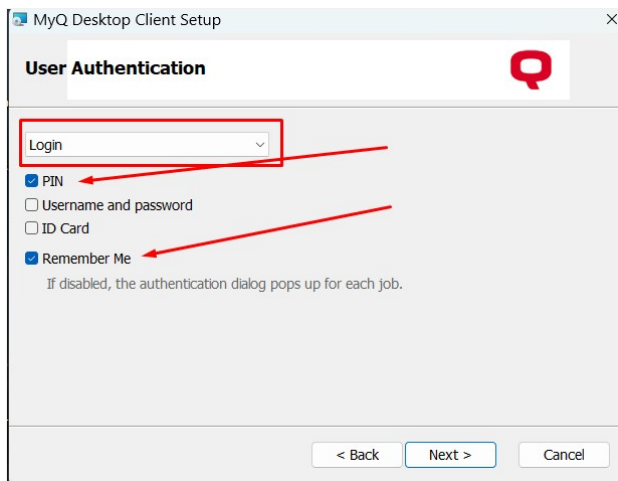
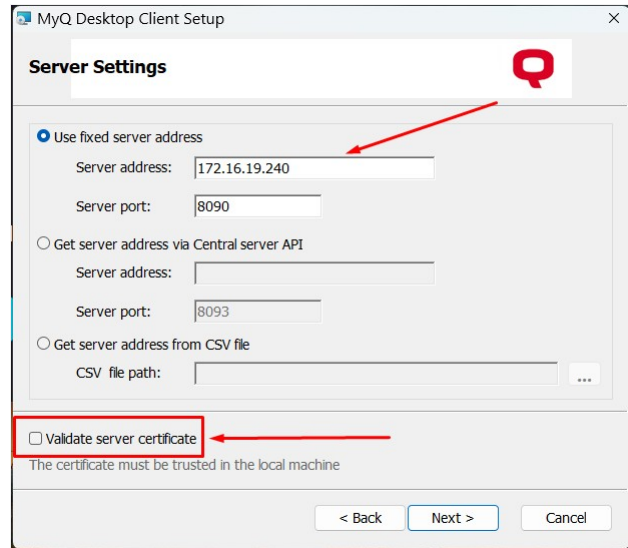
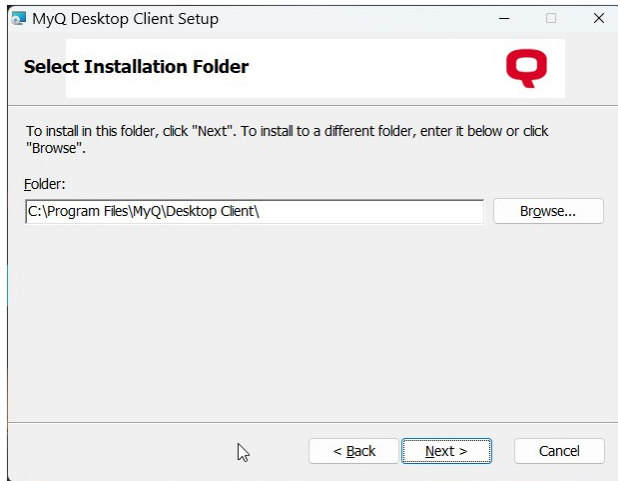
Select Install then select Yes on the next window that opens.

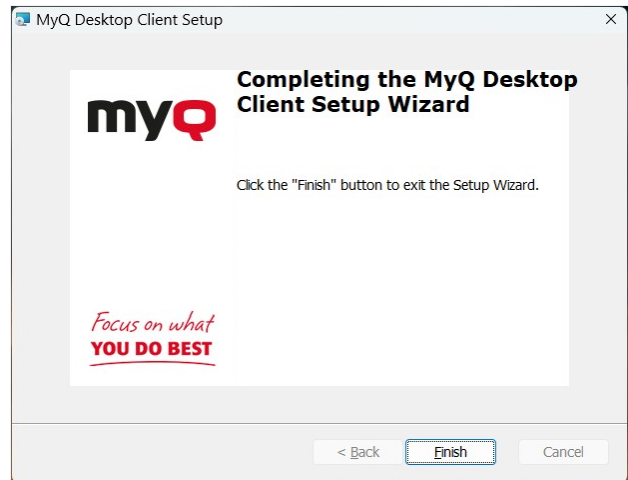
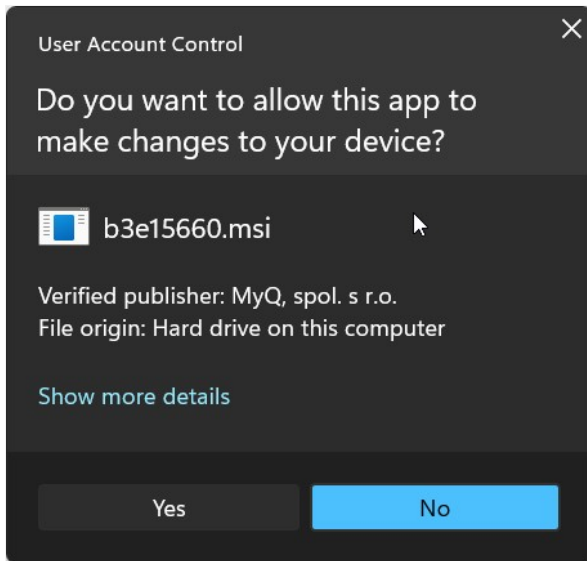
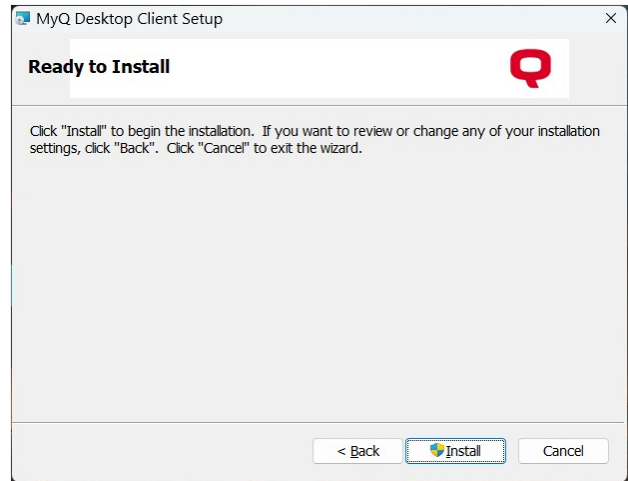
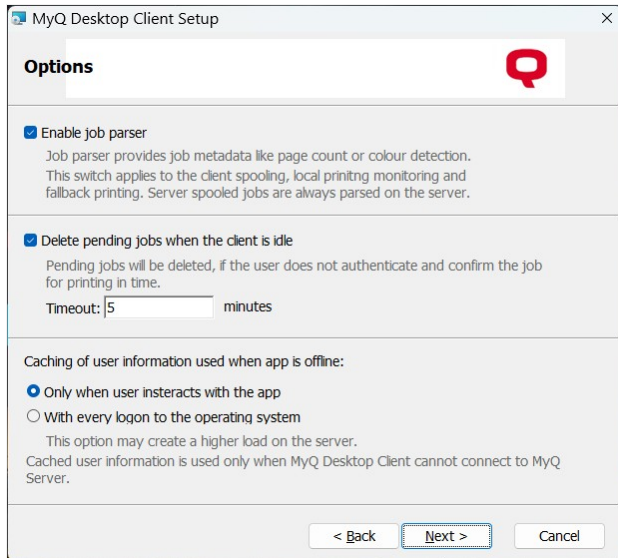
Finally Click Finished.

Important Note: Do not change the Server port, just click in the box so you can click the next button..

Location	Server Address
MC156 - KWFA - Sandy Springs (First Atlanta)	172.16.19.240



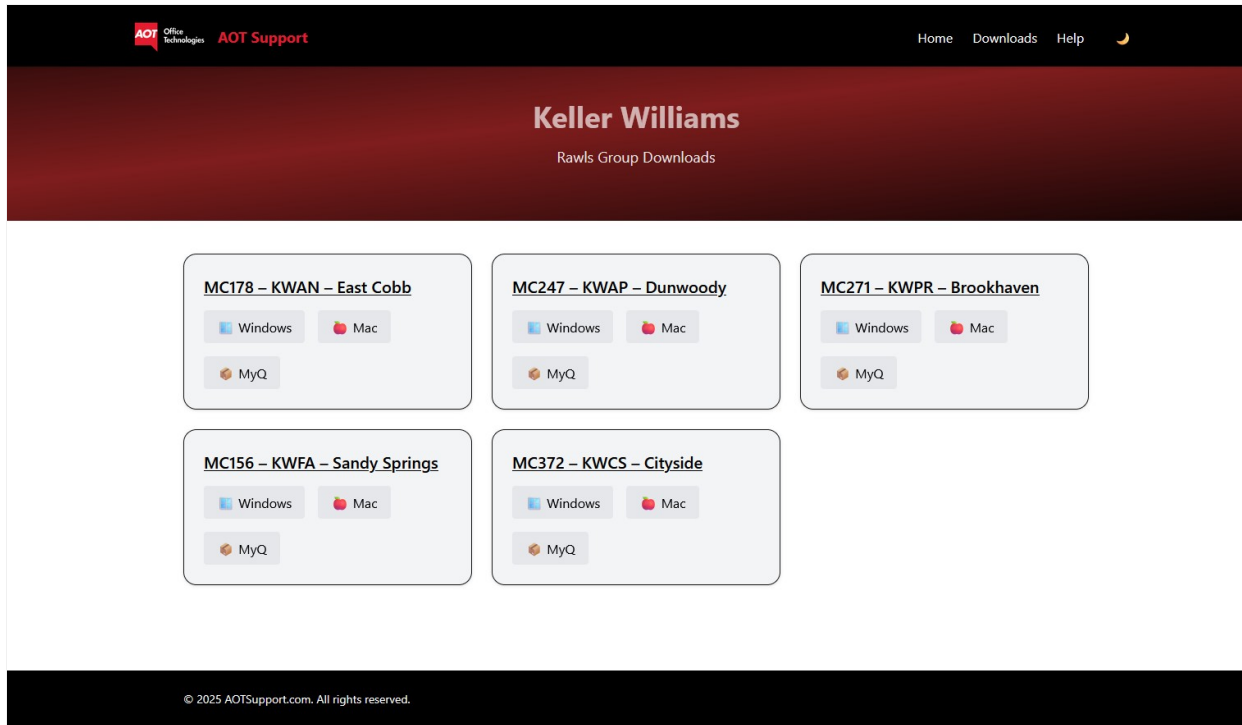




MyQ Install | MC372

Download the Installer

Download the MyQ installer for the correct Market Center then run the installer by following the steps below.



Running the Installer

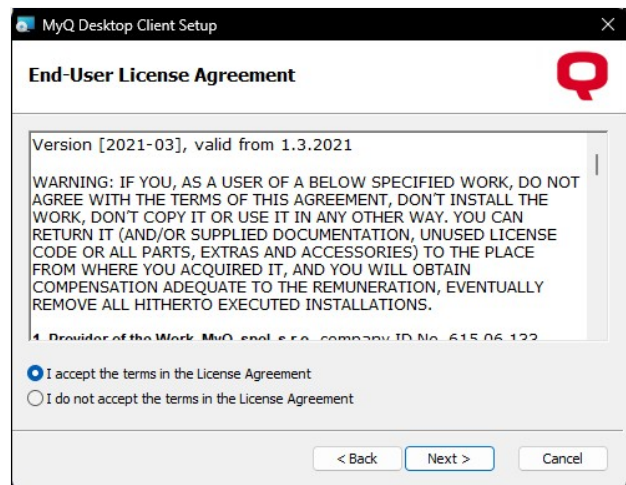
Click next until you reach the screen asking for a server address. Type the server address for the location you are at into the field then click into the server port box so the next button becomes active.

Select Install then select Yes on the next window that opens.

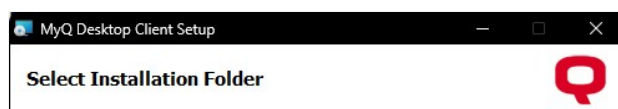
Finally Click Finished.

Important Note: Do not change the Server port, just click in the box so you can click the next button.

Location	Server Address
MC372 - KWCS - Atlanta Rd	172.22.52.12
MC372 - KWCS - Douglasville	192.168.50.20



On the Server Settings Page fill in the server address ([172.22.52.12](#)) and check the **Allow insecure communication box**.



To install in this folder, click "Next". To install to a different folder, enter it below or click "Browse".

Folder:

C:\Program Files\MyQ\Desktop Client\ Browse...

Server address:

Server port:

Server LPR port:

Allow unsecure communication

Automatically switch between multiple servers

CSV file path: ...

On the User Authentication screen Select the drop down and change to **Login**, Check **PIN** and **Enable the "Remember Me" Feature**.

MyQ Desktop Client Setup

Additional Settings

Enable local print monitoring

Enable job parser for local print monitoring

Monitored ports:

Leave the field empty to monitor all ports
Separate port names with a ',' e.g.: USB, My Printer Port, LPT

Client spooling

Enable job parser for client spooling

Max size of all stored jobs: MB

Delete jobs after: days

Append domain name to username

MyQ Desktop Client Setup

User Authentication

▾

PIN

Username and password

ID Card

Enable the "Remember Me" feature

Print Job Security

Set the client idle state after seconds.

Automatically delete pending jobs when the client is idle

MyQ Desktop Client Setup

Fallback Printing

Disabled

Set fallback printer IP address

Show popup to select fallback printer from the list of last used devices

Show popup to type fallback printer IP address

Fallback printer IP address:

Enable accounting of print jobs sent to fallback printer

Enable Job parser for print jobs sent to fallback printer

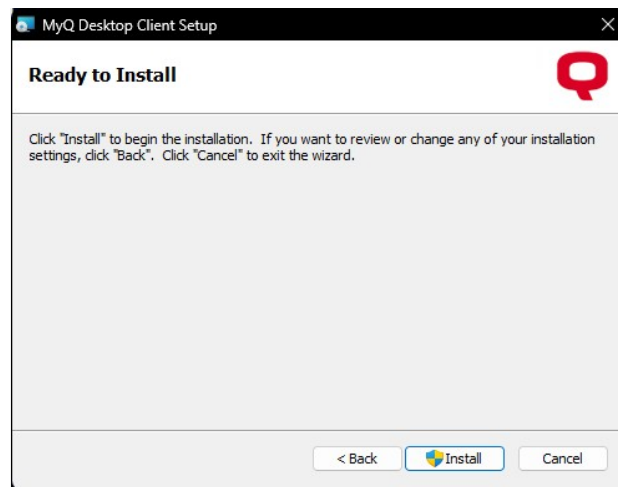
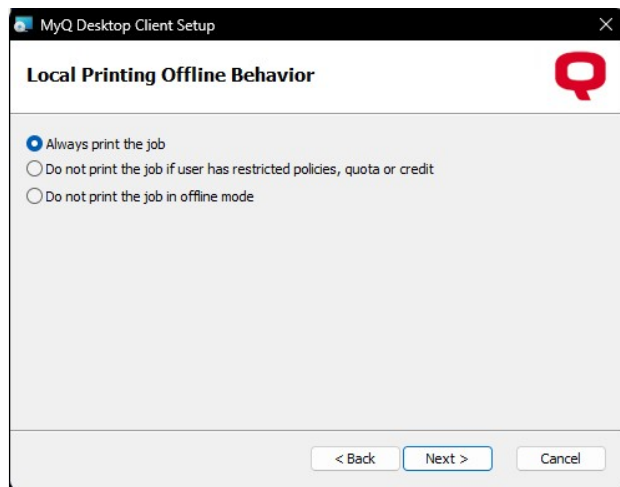
MyQ Desktop Client Setup

Release Job Protocol

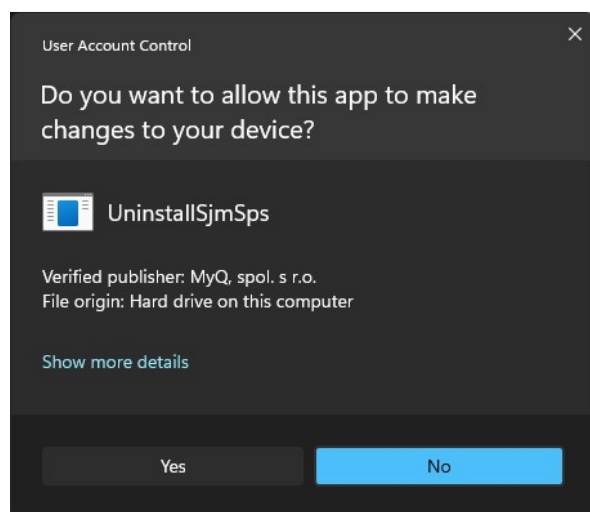
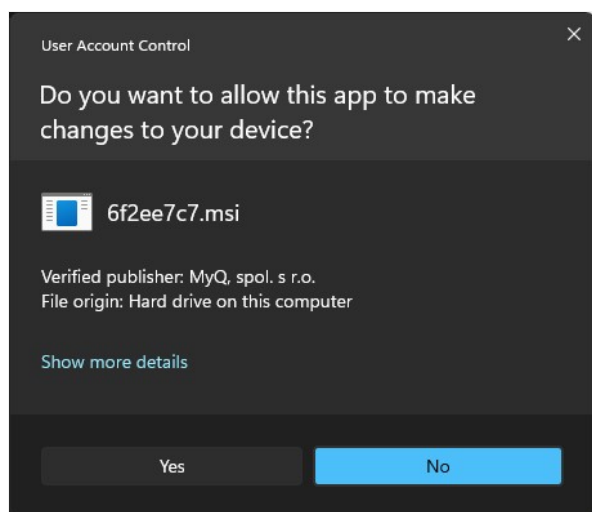
These settings are used to release jobs to the printer when client spooling or fallback printing is used.

Printing protocol: ▾

Printing port:



When the following UAC Prompts show up, Click **YES**

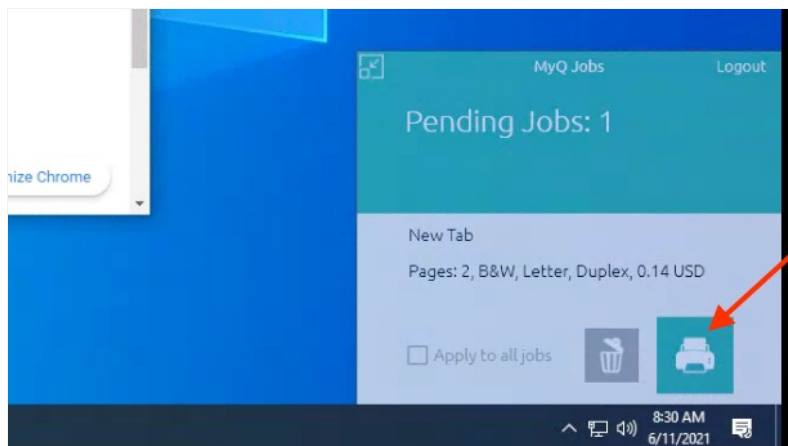
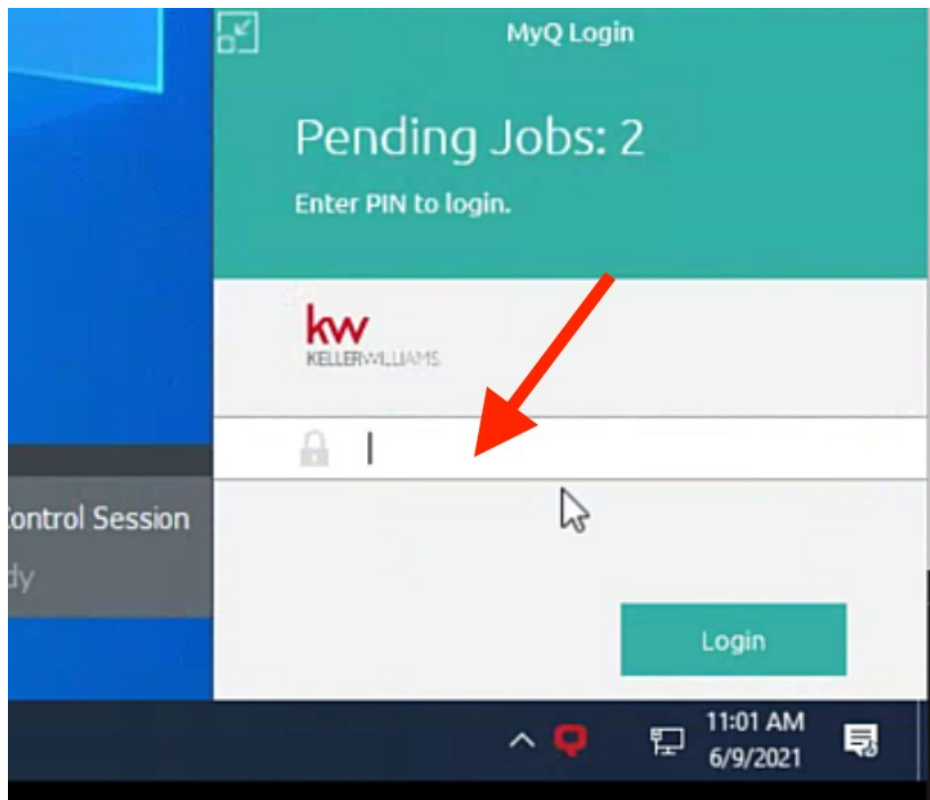
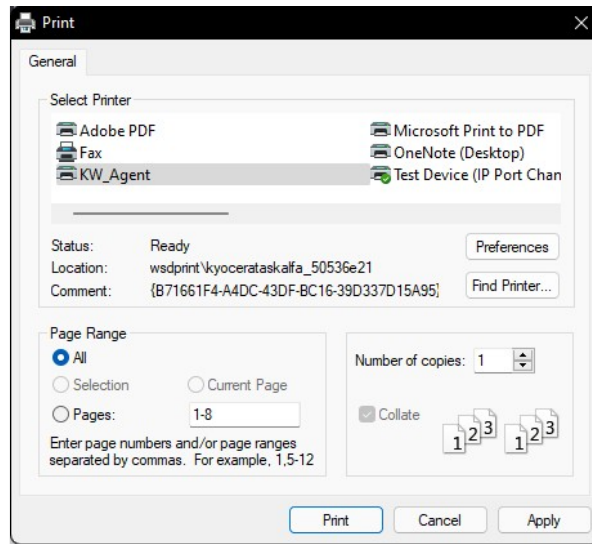


Printing with MyQ on Windows

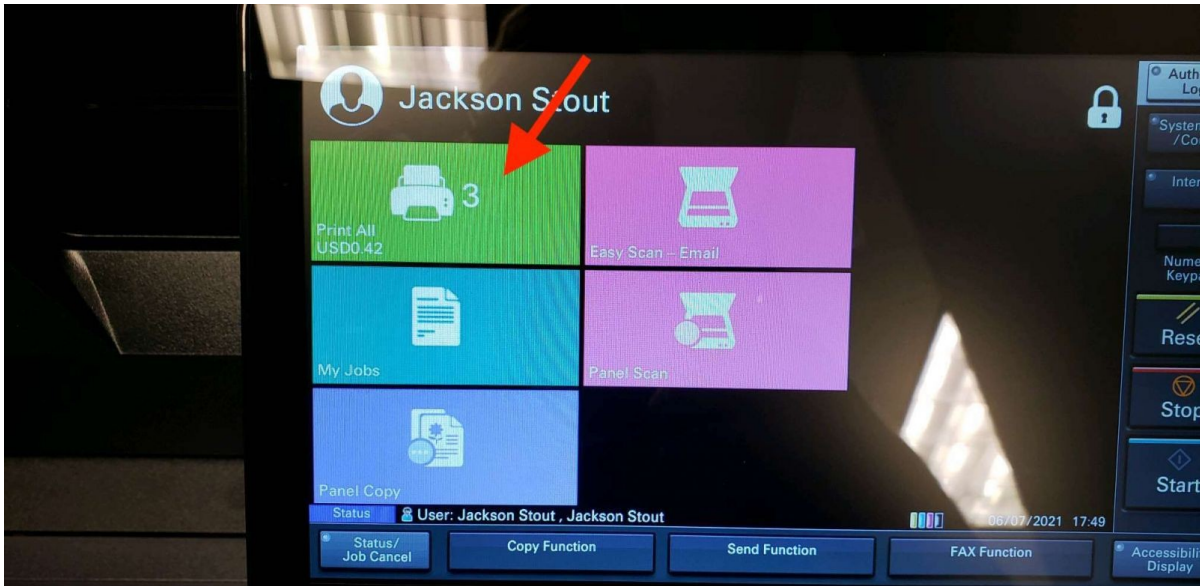
Now that the print driver and MyQ are installed you are ready to start printing!

Choose the KW_Agent Printer from the print dialog and press print. The green window in the bottom right will open asking for your pin code. type in your pin code and press Login.

KEY CONCEPT: Users no longer print directly to a KW printer. All print jobs are now going to a network queue named "KW_Agent". Once you send the print job to the queue, approach ANY of the new Kyocera printers . Use your copy code to logon to the copier. Your job will be waiting for you. Press the green Print All button and your job will finish.



Type in your accounting code in the "Accounting field"



Mac - Install Guide

Use the list at the top of the page to download the driver for the market center you are at.

Important Note: Click on images to enlarge.

Important Note: It is recommended to use Safari to download the installer.

After clicking on the download icon click the application and continue to run the installer.

On the warning message click "Open" then on the installer window Click the box for your Market Center, once the progress bar fills you can close the application.

